



Rescan™ Environmental Services Ltd.

Sixth Floor, 1111 West Hastings Street
Vancouver, British Columbia
Canada, V6E 2J3
Telephone: (604) 689-9460
Facsimile: (604) 687-4277
e-mail: rescan@rescan.com

September 3, 2008

**Copper Fox Metals Inc.
Suite 1330 - 1100 Melville Street
Vancouver, BC
V6E 4A6**

**Attention: Shane Uren, M.A.Sc., R.P.Bio.
VP Environment & Permitting**

Dear Shane:

**Re: Navigable Waters Assessment along the Proposed Access Road for the Schaft
Creek Project**

As required, streams identified along the proposed road for the Schaft Creek Project (Project) have been assessed in the field to identify any proposed road crossings that may require approvals from the Navigable Waters Protection Division (NWPD) of Transport Canada.

In order to provide NWPD with the information required to assess whether streams in the Project area are navigable, data collected in the field are presented in this package. Attached please find the following:

- Figure 1, which shows the location of the Schaft Creek Project;
- Figures 2 through 9, which display the proposed road and all of the 186 stream crossings surveyed;
- Table 1, which lists all of the stream crossings and provides information for each crossing;
- Table 2, which lists the 16 potentially navigable streams; and
- Individual crossing site forms containing a map identifying the location of the crossing, habitat information, and photographs for all 16 potentially navigable streams.

In our opinion, the majority of the streams and drainages (170) along the proposed access road are non-navigable due to their small size (width and depth), high gradient, or high abundance of dead trees or dense riparian habitat. We used a lower size limit of 3 m bankfull width to



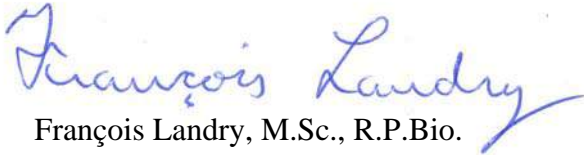
classify streams as potentially navigable. This document presents the bankfull and wetted width, bankfull depth, and gradient of each crossing, as well as photographs to assist the NWPD in the determination of the navigability of the streams along the road.

I hope that you will find the enclosed information clear and concise. Should you have any questions regarding the enclosed information, please do not hesitate to contact me.

Sincerely,

RESCAN™ ENVIRONMENTAL SERVICES LTD.

per:



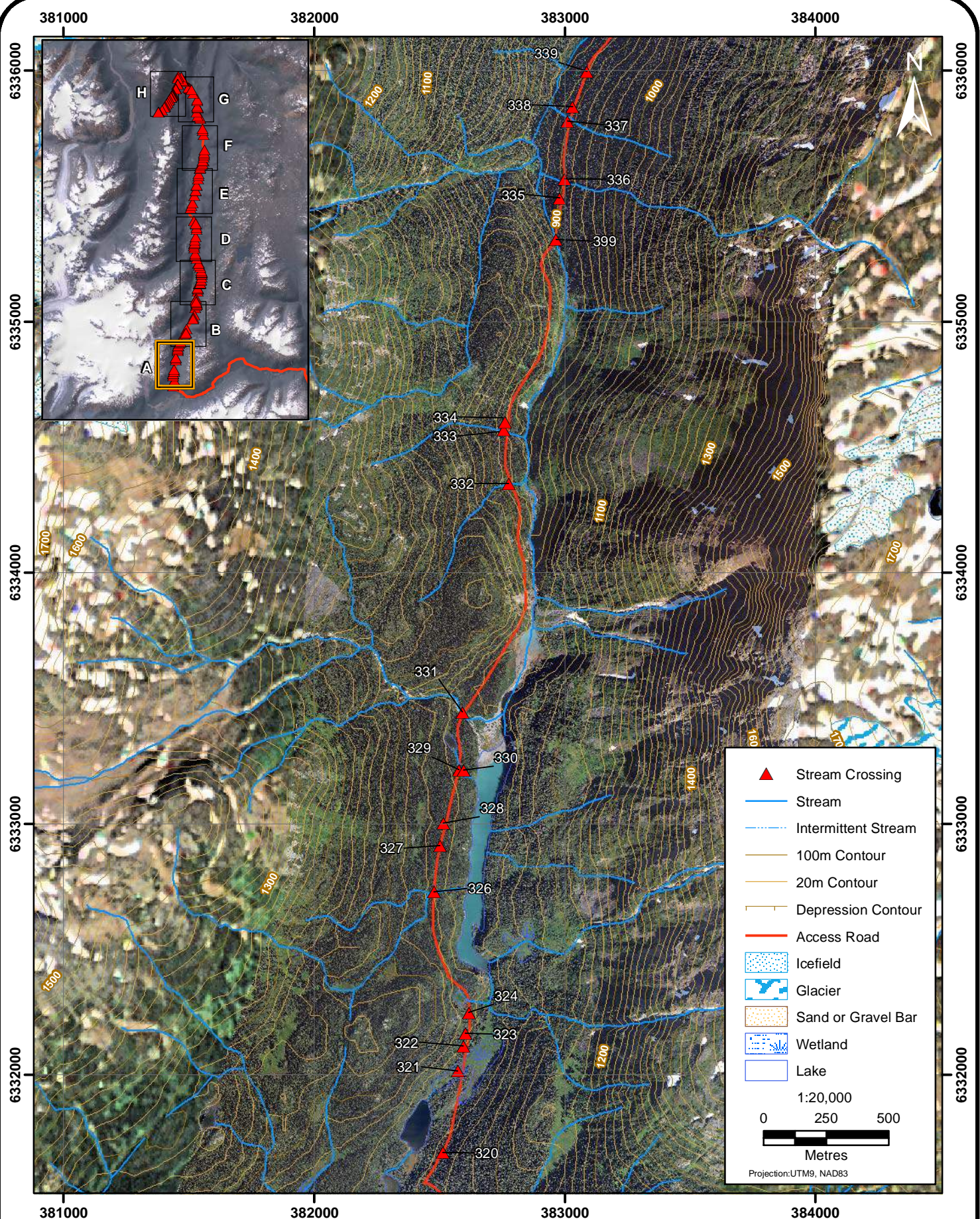
François Landry, M.Sc., R.P.Bio.
Manager of Fisheries Services

/encl

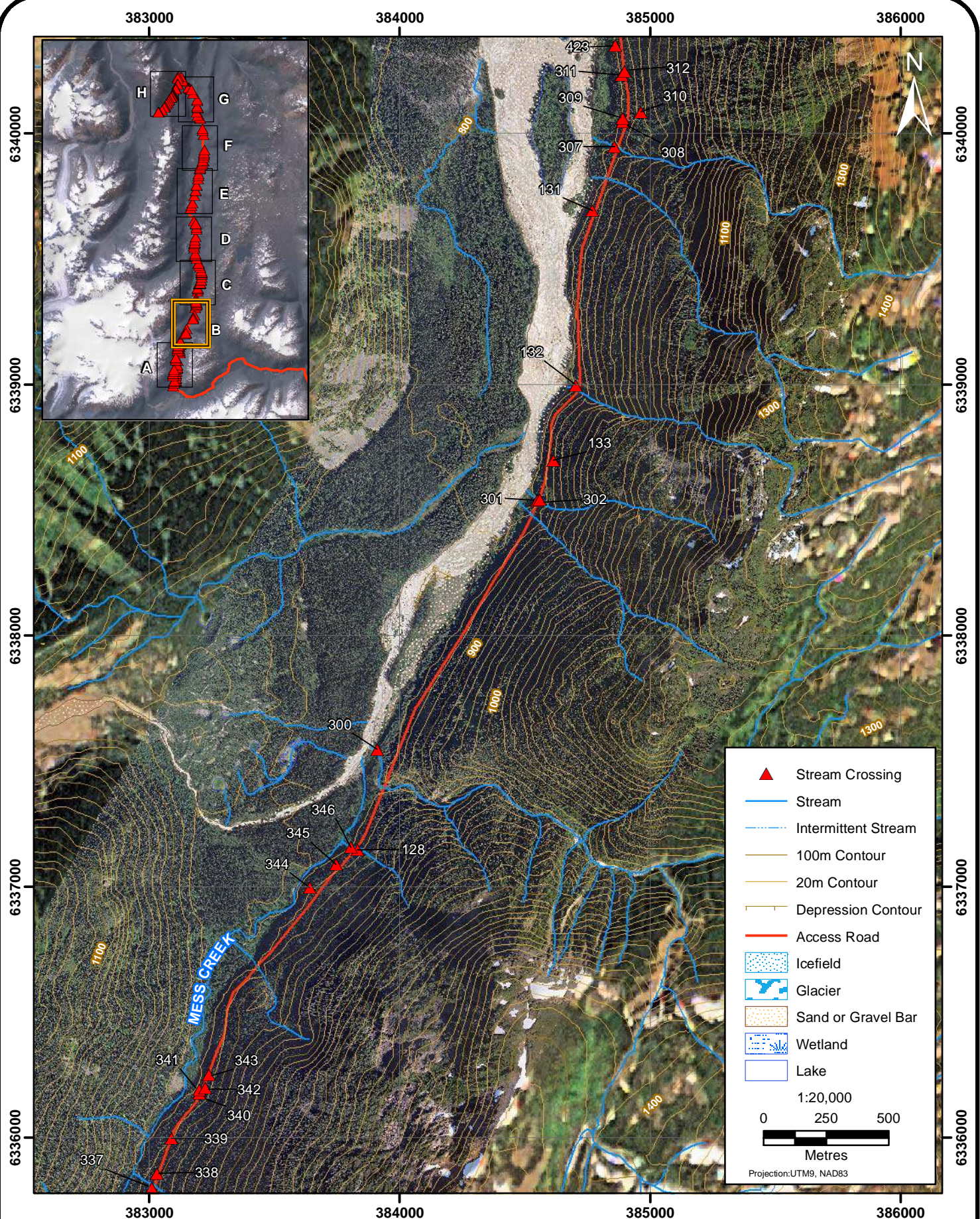


Location Map for Schaft Creek Project

FIGURE 1



Stream Crossings Along the Schaft Creek Project Proposed Road - Map A



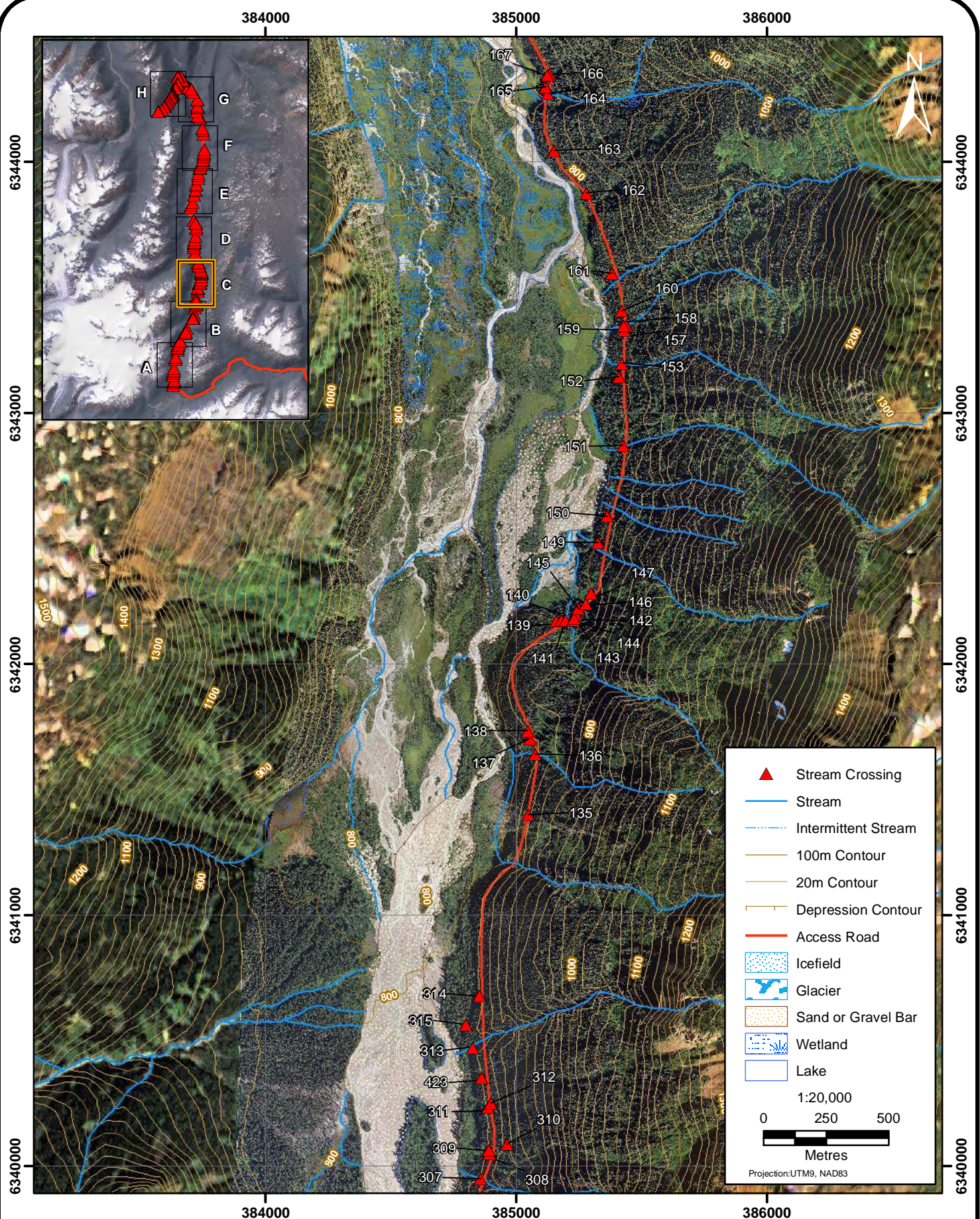
	Stream Crossing
	Stream
	Intermittent Stream
	100m Contour
	20m Contour
	Depression Contour
	Access Road
	Icefield
	Glacier
	Sand or Gravel Bar
	Wetland
	Lake

1:20,000

0 250 500

Metres

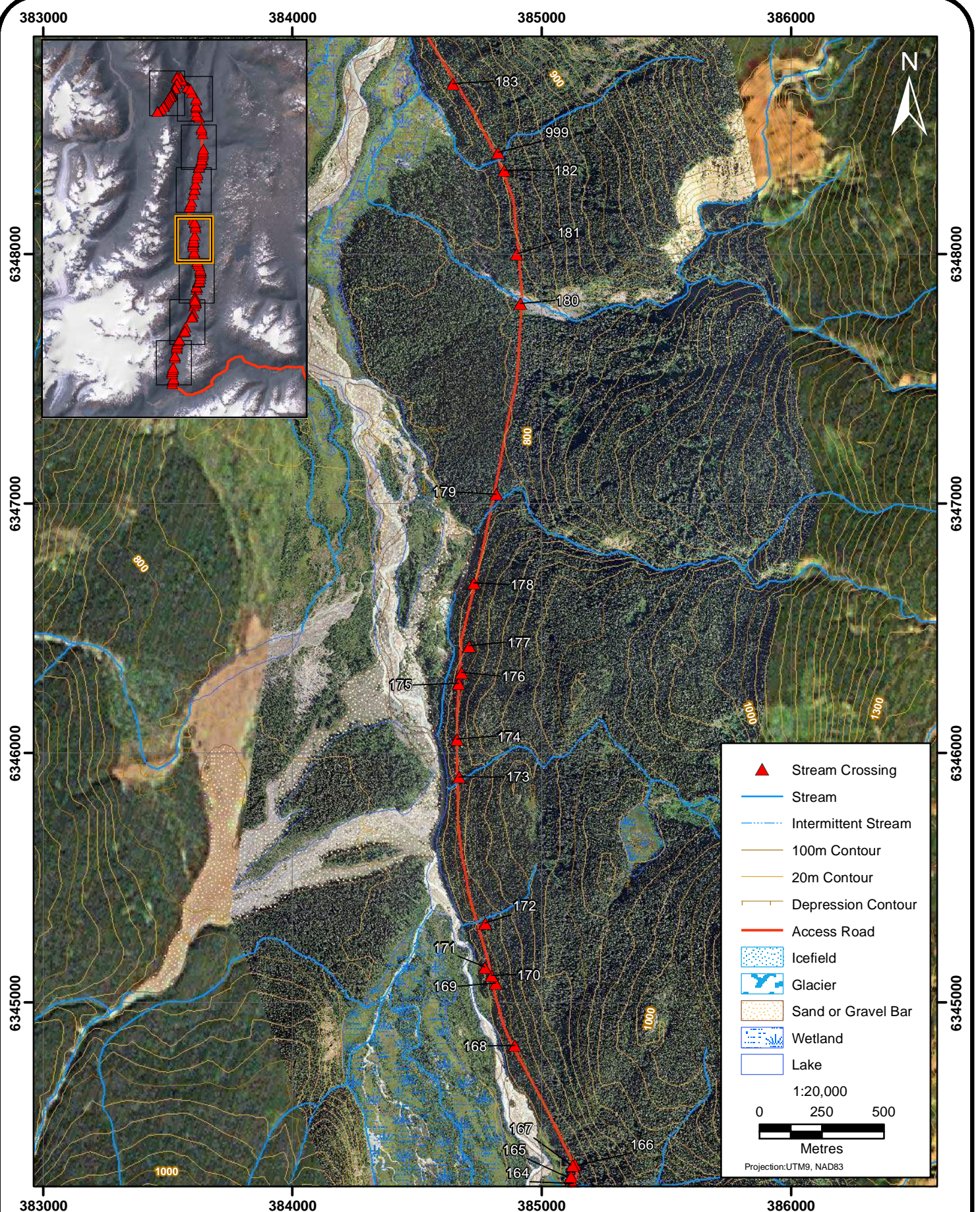
Projection: UTM9, NAD83



Stream Crossings Along the Schaft Creek Project Proposed Road - Map C

FIGURE 4

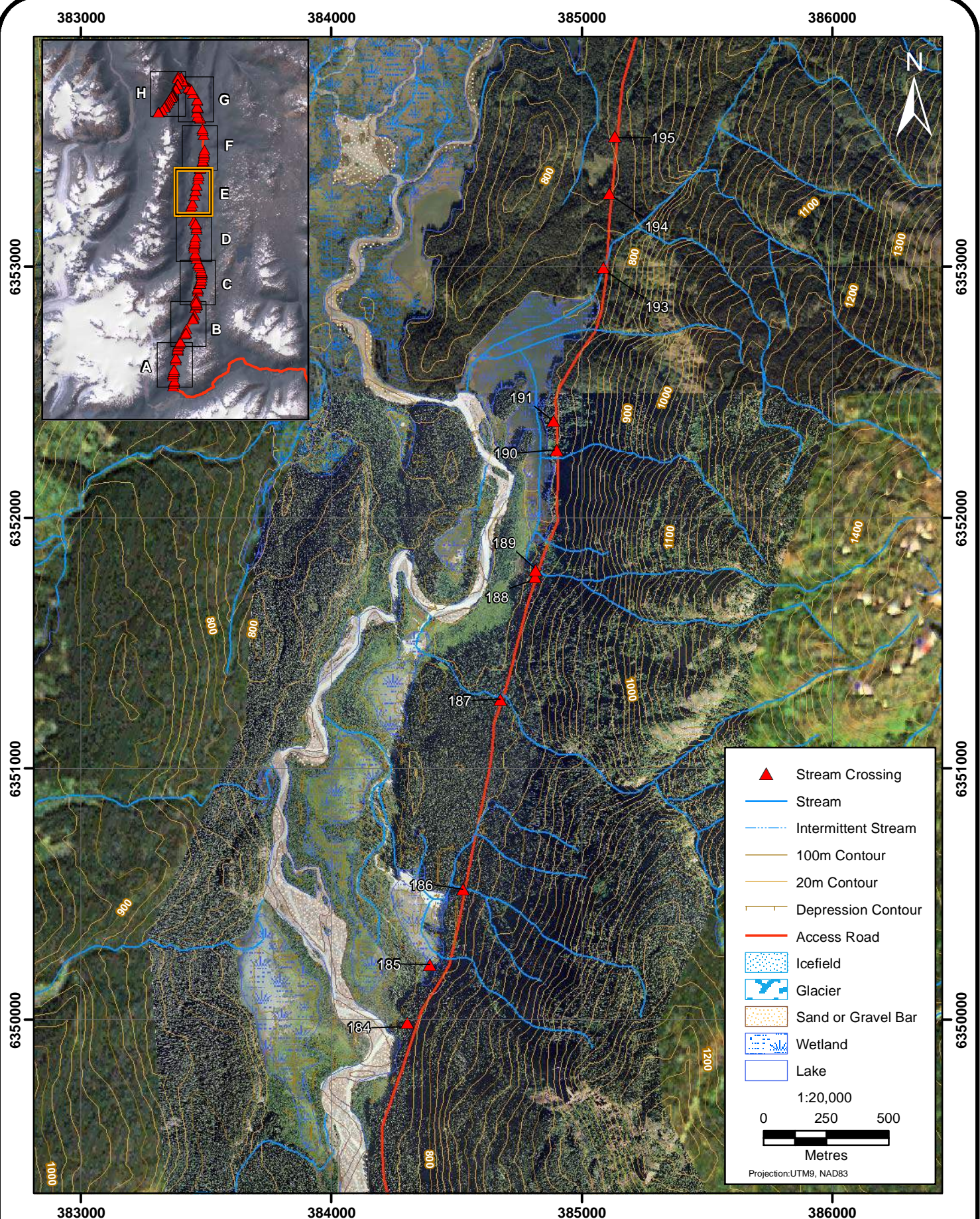




Stream Crossings Along the Schaft Creek Project Proposed Road - Map D

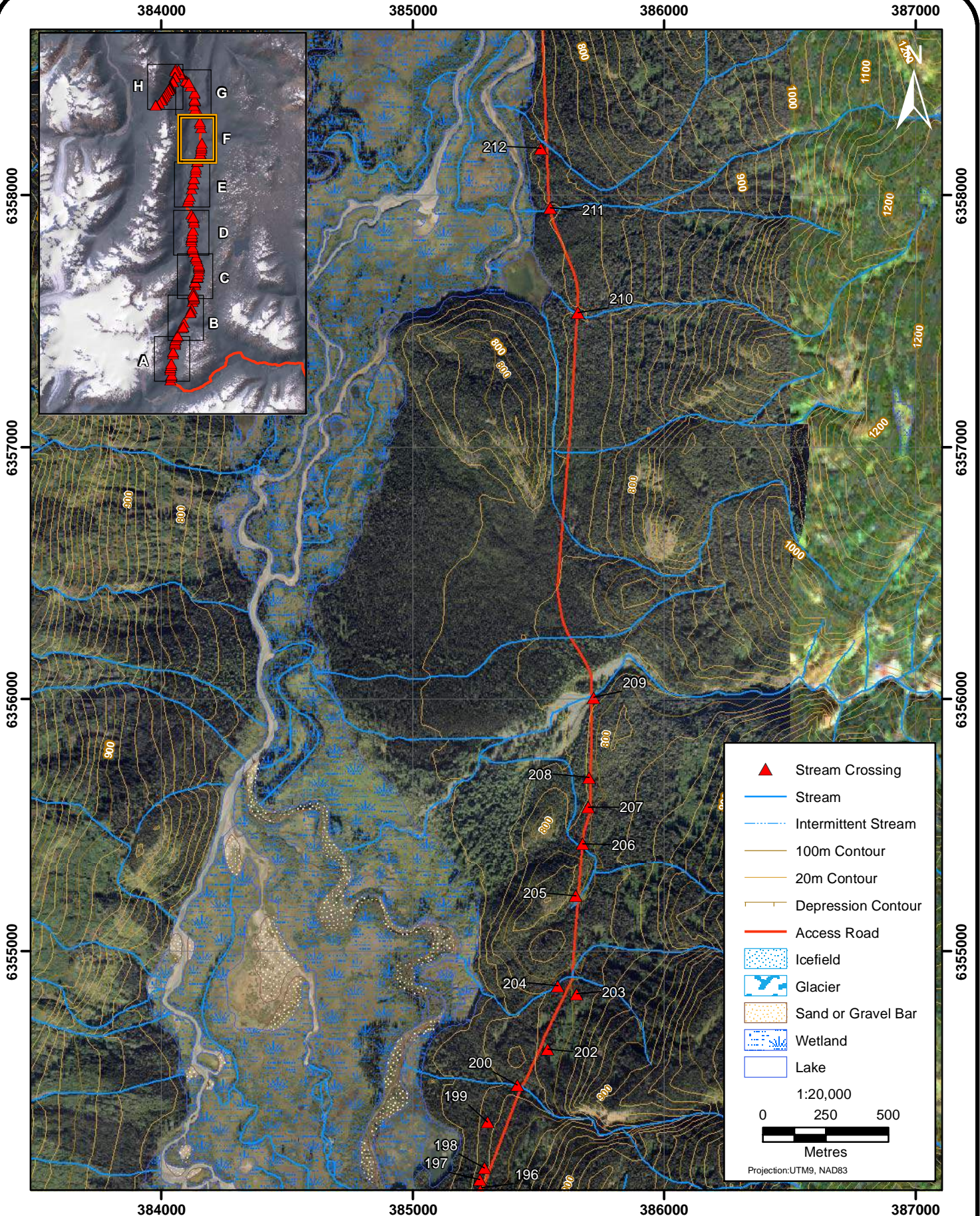
FIGURE 5

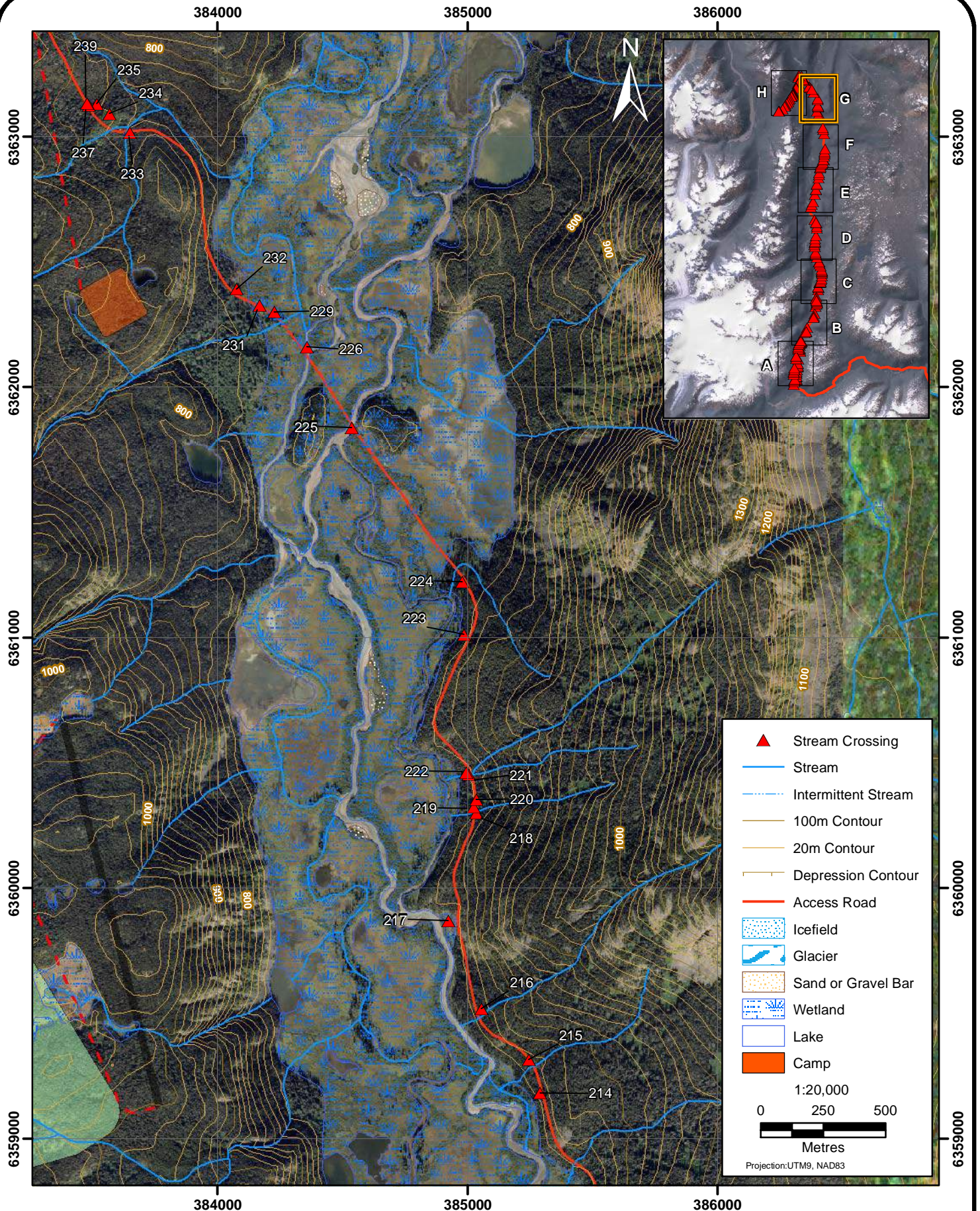




**Stream Crossings Along the Schaft Creek
Project Proposed Road - Map E**

FIGURE 6

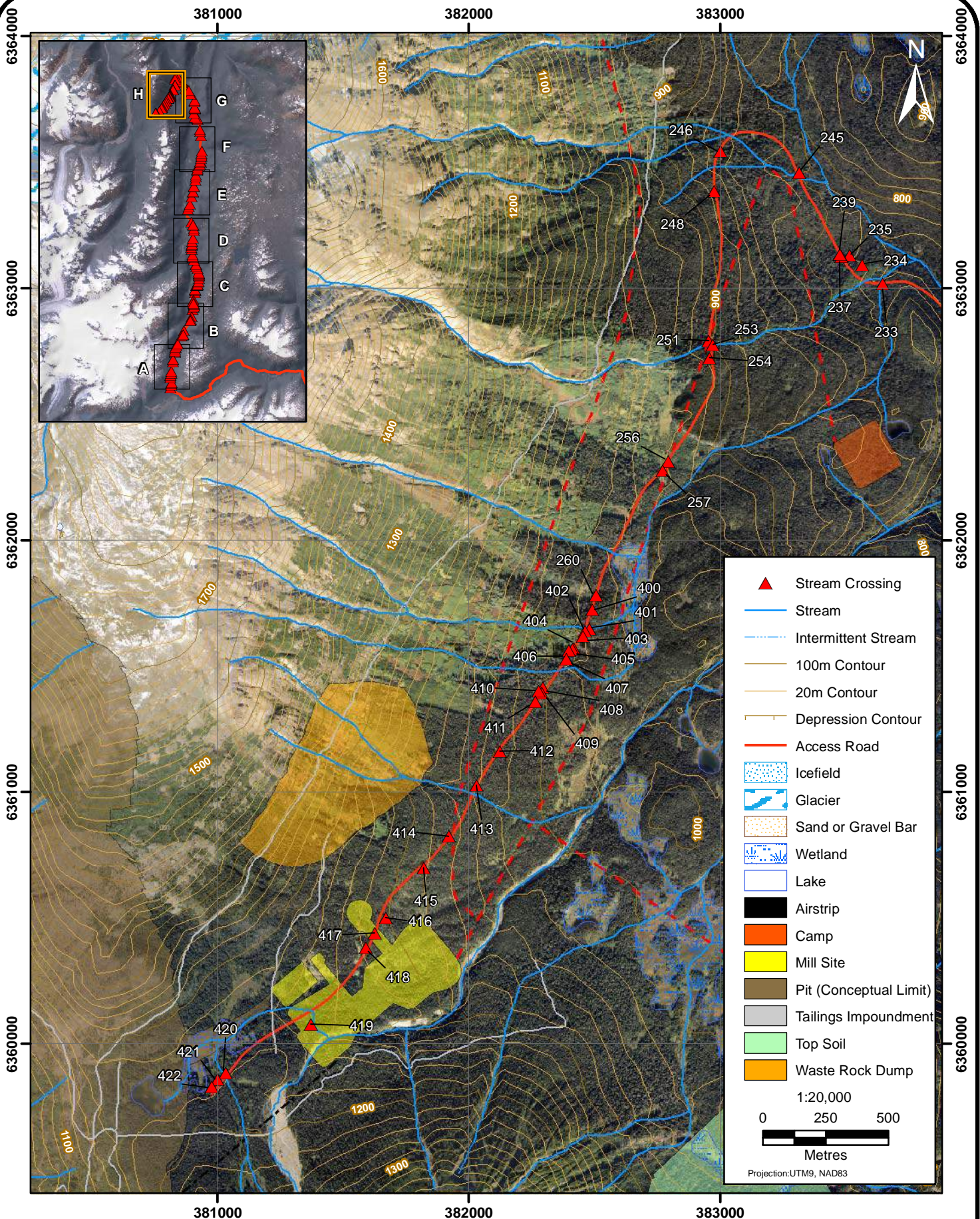




Stream Crossings Along the Schaft Creek Project Proposed Road - Map G

FIGURE 8





Stream Crossings Along the Schaft Creek Project Proposed Road - Map H

FIGURE 9

Table 1
Potentially Navigable Stream Crossings of the Proposed Schaft Creek Project Road Route

Local Name	Site	ILP	NID	UTM		Average Channel	Average Wetted	Average	Average Pool	Average Bankfull	Stream Class
				Eastings	Northing	Width (m)	Width (m)	Gradient (%)	Depth (m)	Depth (m)	
M26	128	1027	10034	383831	6337147	2.1	1.7	37.0	N/A	0.5	S6
M33	131	1030	10040	384771	6339694	1.7	1.5	33.5	0.2	0.6	S6
M32	132	1031	10043	384704	6338998	2.5	0.7	45.0	0.1	0.6	S6
M31	133	1032	10044	384615	6338697	N/A	N/A	N/A	N/A	N/A	NCD
	134	1033	10045								S6
	135	1034	10046	385048	6341401	N/A	N/A	N/A	N/A	N/A	NCD
M40	136	1035	10047	385075	6341641	0.9	0.4	34.0	0.1	0.2	S6
M41	137	1036	10048	385054	6341702	N/A	N/A	N/A	N/A	N/A	NCD
	138	1037	10049	385045	6341734	N/A	N/A	N/A	N/A	N/A	NCD
M42	139	1038	10050	385161	6342171	4.9	1.9	24.0	0.1	0.8	S3
	140	1039	19999	385182	6342174	N/A	N/A	N/A	N/A	N/A	NCD
M43	141	1040	10052	385198	6342173	1.1	0.8	21.5	N/A	0.2	S6
M44	142	1041	10054	385239	6342198	1.1	1.1	19.0	0.2	0.2	S6
M45	143	1042	10057	385229	6342175	1.2	0.7	21.5	N/A	0.3	S6
	144	1043	10058	385233	6342183	1.8	1.1	27.0	N/A	0.2	S6
	145	1044	10059	385249	6342220	N/A	N/A	N/A	N/A	N/A	NCD
M46	146	1045	10060	385280	6342239	2.7	1.5	21.0	N/A	0.3	S6
M47	147	1046	10061	385300	6342282	1.0	0.8	31.5	N/A	0.2	S6
	148	1047	10062								S6
M49	149	1048	10013	385327	6342484	N/A	N/A	N/A	N/A	N/A	NCD
M50	150	1049	10064	385365	6342590	2.8	0.9	47.5	N/A	N/A	S6
M51	151	1050	10065	385429	6342870	2.4	1.2	22.0	0.1	0.4	S6
	152	1051	10066	385412	6343145	N/A	N/A	N/A	N/A	N/A	NCD
M52 Hits Creek	153	1052	10067	385423	6343199	4.0	2.3	22.0	0.3	0.6	S5
M53	157	1056	10068	385432	6343329	0.8	0.8	18.5	0.2	0.3	(S4)
M53	158	1057	10069	385441	6343349	1.1	1.0	15.0	N/A	0.2	(S4)
M53	159	1058	10070	385431	6343349	1.9	1.5	11.0	N/A	0.4	(S3)
	160	1059	10072	385422	6343408	N/A	N/A	N/A	N/A	N/A	NCD
M54	161	1060	10073	385383	6343556	2.3	1.1	13.5	0.2	0.3	S4
M55	162	1061	10076	385282	6343877	N/A	N/A	N/A	N/A	N/A	FSZ
	163	1062	10078	385153	6344047	N/A	N/A	N/A	N/A	N/A	NCD
M56	164	1063	10079	385127	6344274	N/A	N/A	N/A	N/A	N/A	FSZ
M57	165	1064	10081	385118	6344301	2.0	1.7	22.5	0.3	0.4	S4
M58	166	1065	10084	385134	6344353	1.6	0.6	35.5	N/A	0.3	S6
M59	167	1066	10085	385126	6344347	1.4	1.1	36.0	N/A	0.2	S6
M60	168	1067	10086	384891	6344828	2.1	1.4	29.0	N/A	0.4	S6
	169	1068	10087	384815	6345077	N/A	N/A	N/A	N/A	N/A	NCD
M61	170	1069	10088	384799	6345108	N/A	N/A	N/A	N/A	N/A	NCD
M62	171	1070	10089	384772	6345142	0.6	0.4	35.0	N/A	0.2	S6
	172	1071	10090	384774	6345318	N/A	N/A	N/A	N/A	N/A	NCD
M64 Itsh Creek	173	1072	10091	384668	6345904	4.2	2.7	27.0	0.2	0.7	S3
	174	1073	10092	384659	6346055	N/A	N/A	N/A	N/A	N/A	NCD
	175	1074	10093	384667	6346279	N/A	N/A	N/A	N/A	N/A	NCD
	176	1075	10094	384679	6346322	N/A	N/A	N/A	N/A	N/A	NCD
M65	177	1076	10095	384709	6346429	1.1	0.5	31.5	N/A	0.3	S6
M66	178	1077	10096	384728	6346681	0.9	0.3	32.0	N/A	0.3	S6
M67 Jori Creek	179	1078	10097	384817	6347037	6.8	4.4	6.7	0.3	0.9	S2
M68 Alexander Creek	180	1079	10098	384913	6347801	21.1	6.2	5.5	N/A	1.8	S2
M69	181	1080	10099	384899	6348000	N/A	N/A	N/A	N/A	N/A	NCD
	182	1081	10100	384850	6348334	N/A	N/A	N/A	N/A	N/A	NCD
	183	1082	10102	384642	6348682	N/A	N/A	N/A	N/A	N/A	NCD
	184	1083	10103	384302	6349989	N/A	N/A	N/A	N/A	N/A	FSZ
	185	1084	10104	384392	6350219	N/A	N/A	N/A	N/A	N/A	FSZ
M71	186	1085	10105	384525	6350519	0.7	0.0	18.0	N/A	0.4	S6

Highlighted rows indicate potentially navigable crossings

(continued)

Table 1
Potentially Navigable Stream Crossings of the Proposed Schaft Creek Project Road Route (continued)

Local Name	Site	ILP	NID	UTM		Average Channel	Average Wetted	Average	Average Pool	Average Wb Depth	Stream Class
				Easting	Northing	Width	Width	Gradient	Depth		
M72 Mikael Creek	187	1086	10106	384673	6351276	6.8	3.8	4.0	0.4	0.7	S2
	188	1087	10107	384812	6351764	N/A	N/A	N/A	N/A	N/A	NCD
M73	189	1088	10108	384814	6351793	1.6	0.0	33.0	N/A	0.3	S6
M74	190	1089	10109	384901	6352271	1.0	0.6	21.5	N/A	0.3	S6
M75	191	1090	10110	384887	6322387	0.7	0.5	19.5	0.1	0.2	S6
	192	1091	10111	384909	6352546						S6
M77	193	1092	10112	385087	6352997	1.2	0.0	6.5	N/A	0.2	(S4)
M78	194	1093	10113	385110	6353293	1.6	1.1	13.5	N/A	0.3	S4
M79	195	1094	10114	385132	6353520	2.6	1.5	14.0	0.2	0.3	(S3)
	196	1095	10115	385269	6354052	N/A	N/A	N/A	N/A	N/A	NCD
M80	197	1096	10116	385267	6354093	N/A	N/A	N/A	N/A	N/A	NCD
	198	1097	10117	385286	6354139	N/A	N/A	N/A	N/A	N/A	NCD
	199	1098	10118	385297	6354321	N/A	N/A	N/A	N/A	N/A	NCD
M81 Alicia Creek	200	1099	10119	385415	6354469	6.5	4.2	9.0	0.3	0.5	S2
	201	1100	10120			N/A	N/A	N/A	N/A	N/A	NCD
M82	202	1101	10121	385537	6354612	N/A	N/A	N/A	N/A	N/A	NCD
M83	203	1102	10122	385653	6354829	1.1	0.5	15.0	N/A	0.4	S6
M84	204	1103	10123	385578	6354862	1.3	0.8	5.0	0.3	0.3	S6
	205	1104	10124	385650	6355219	N/A	N/A	N/A	N/A	N/A	NCD
M85	206	1105	10125	385676	6355426	1.0	0.8	20.5	N/A	0.3	S6
M86	207	1106	10126	385699	6355571	1.4	0.9	10.5	0.2	0.3	(S4)
M87	208	1107	10127	385702	6355690	0.8	0.6	25.0	N/A	0.3	S6
M88 Nahta Creek	209	1108	10128	385720	6356007	19.7	16.2	3.5	N/A	1.8	S2
	210	1109	10130	385658	6357535	N/A	N/A	N/A	N/A	N/A	NCD
	211	1110	10131	385548	6357951	1.1	1.0	7.5	0.2	0.3	(S4)
M89	212	1111	10132	385511	6358187	1.4	0.8	6.0	N/A	0.4	S4
	213	1112	10133	385453							S6
M91	214	1113	10134	385290	6359181	N/A	N/A	N/A	N/A	N/A	NCD
M92	215	1114	10135	385245	6359315	0.8	0.7	35.0	N/A	0.3	S6
M93	216	1115	10136	385054	6359517	1.2	0.5	27.0	N/A	0.2	S6
	217	1116	10137	384922	6359870	N/A	N/A	N/A	N/A	N/A	FSZ
M94	218	1117	10138	385034	6360299	1.2	0.0	22.0	N/A	0.2	S6
	219	1118	10139	385024	6360324	N/A	N/A	N/A	N/A	N/A	NCD
M96	220	1119	10140	385034	6360354	1.4	0.4	29.0	N/A	0.4	S6
M97	221	1120	10141	385004	6360454	0.9	0.0	22.0	N/A	0.3	S6
M98	222	1121	10142	384993	6360461	0.8	0.0	24.0	N/A	0.3	S6
M99 Wayne Creek	223	1122	10143	384985	6361012	1.2	0.3	26.0	N/A	0.4	S6
	224	1123	10144	384978	6361222	N/A	N/A	N/A	N/A	N/A	NCD
	227	1124	10152	384304	6362203	N/A	N/A	N/A	N/A	N/A	NCD
M103	229	1126	10153	384227	6362300	0.7	0.5	1.5	N/A	0.2	S6
M104	230	1127	10154								S6
M105	231	1128	10155	384167	6362325	1.2	0.0	0.0	N/A	0.2	(S4)
M106 Shift Creek	232	1129	10156	384075	6362392	N/A	N/A	N/A	N/A	N/A	S3
M107 Big B Creek	233	1130	10157	383648	6363017	2.9	2.5	5.5	0.3	0.3	S3
M108	234	1131	10158	383567	6363093	2.1	0.9	12.5	N/A	0.3	S6
M109	235	1132	10160	383516	6363131	2.1	1.6	20.5	0.2	0.3	S6
M110	237	1133	10163	383484	6363126	1.8	1.5	16.0	0.2	0.3	(S4)
M111	238	1134	10164	383478	6363135	N/A	N/A	N/A	N/A	N/A	NCD
M112	239	1135	10165	383477	6363136	0.8	0.9	13.5	0.2	0.3	(S4)
M113	245	1138	10170	383316	6363459	1.5	1.3	19.5	0.1	0.3	S6
M114	246	1138	10172	383003	6363545	3.1	1.2	18.0	N/A	0.4	S3
M115	247	1139	10173	382972	6363490	N/A	N/A	N/A	N/A	N/A	NCD
M116	248	1140	10174	382977	6363387	0.5	0.3	28.0	N/A	0.3	S6
	249	1141	10175	382987	6363041	N/A	N/A	N/A	N/A	N/A	NCD
M117	250	1142	10176	382947	6362989	N/A	N/A	N/A	N/A	N/A	NCD

Highlighted rows indicate potentially navigable crossings

(continued)

Table 1
Potentially Navigable Stream Crossings of the Proposed Schaft Creek Project Road Route (continued)

Local Name	Site	ILP	NID	UTM		Average Channel	Average Wetted	Average	Average Pool	Average Wb Depth	Stream Class
				Eastings	Northing	Width	Width	Gradient	Depth		
	251	1143	10177	382955	6362792	2.0	1.7	23.0	N/A	0.3	S6
	252	1144	10178	382943	6362755	N/A	N/A	N/A	N/A	N/A	NCD
M120	253	1145	10179	382972	6362776	3.3	0.3	28.5	N/A	0.4	S5
	254	1146	10180	382959	6362724	1.0	1.0	21.0	0.1	0.3	S6
	255	1147	10181	382799	6362320	N/A	N/A	N/A	N/A	N/A	NCD
M123	256	1148	10182	382794	6362313	0.8	0.8	9.0	N/A	0.3	S6
M104	257	1149	10183	382772	6362276	0.6	0.6	4.5	N/A	0.3	S6
	258	1150	10184	382761	6362246	N/A	N/A	N/A	N/A	N/A	NCD
	259	1151	10185	382546	6361899	N/A	N/A	N/A	N/A	N/A	NCD
M126	260	1152	10186	382508	6361780	0.8	0.7	14.0	N/A	0.3	S6
M70	999	1999	10101	384824	6348405	N/A	N/A	N/A	N/A	N/A	NCD
M27 Arctic Creek	300	2000	20000	383909	6337546	12.5	8.9	4.3	0.4	0.7	S2
M28	301	2001	20001	384549	6338538	N/A	N/A	N/A	N/A	N/A	NVC
M29	302	2002	20002	384561	6338542						S6
M34	307	2007	20007	384858	6339948	1.9	1.2	37.0	0.1	0.5	S6
M36	308	2008	20008	384893	6340048	1.5	0.8	31.7	0.3	0.5	S6
M37	309	2009	20009	384890	6340063	N/A	N/A	N/A	N/A	N/A	NCD
	310	2010	20010	384963	6340087	0.4	0.2	38.7	N/A	0.3	S6
	311	2011	10227	384887	6340234	2.7	1.9	17.0	0.2	0.3	S6
M38	312	2011	20013	384899	6340250	2.3	2.0	26.0	0.3	0.4	(S4)
	313	2012	20015	384826	6340470	1.3	0.9	17.0	0.1	0.4	S4
	314	2013	20016	384852	6340678	N/A	N/A	N/A	N/A	N/A	NCD
	315	2014	20017	384798	6340564	N/A	N/A	N/A	N/A	N/A	NCD
M222	320	2050	20020	382514	6331690	1.0	0.7	12.0	0.1	0.4	S6
M221	321	2051	20021	382573	6332015	0.8	0.6	1.0	0.4	0.4	S6
M220	322	2052	20022	382595	6332113	N/A	N/A	N/A	N/A	N/A	NCD
	323	2053	20023	382603	6332164	N/A	N/A	N/A	N/A	N/A	NCD
	324	2054	20024	382616	6332247	0.5	0.4	33.3	0.0	0.1	S6
	325	2055	20026	382477	6332669	N/A	N/A	N/A	N/A	N/A	NCD
M219	326	2056	20027	382477	6332728	1.1	0.9	30.7	0.4	0.3	S6
M218	327	2057	20029	382501	6332912	1.2	0.9	18.5	0.2	0.2	S6
	328	2058	20031	382515	6333003	N/A	N/A	N/A	N/A	N/A	NCD
M217	329	2059	20032	382578	6333215	0.8	0.6	21.3	0.1	0.1	S6
	330	2060	20034	382596	6333213	N/A	N/A	N/A	N/A	N/A	NCD
M212	399	2061	20039	382965	6335329	7.9	5.6	8.0	0.2	0.8	(S2)
M216	331	2061	20035	382591	6333445	10.3	3.5	4.0	0.1	0.9	(S2)
M215	332	2062	20036	382775	6334355	1.4	1.0	35.0	0.1	0.5	S6
M214	333	2063	20037	382756	6334570	1.0	0.0	75.0	N/A	0.5	S6
M213	334	2064	20038	382760	6334600	0.8	0.0	43.0	N/A	0.3	S6
M211	335	2066	20040	382980	6335493	1.2	0.0	36.0	N/A	0.3	S6
M210 Chunky Mtn Creek	336	2067	20041	382999	6335568	2.4	0.0	38.0	N/A	0.5	S6
M209	337	2068	20042	383011	6335800	1.2	0.8	47.5	0.0	0.4	S6
M208	338	2069	20043	383031	6335856	1.2	0.6	45.0	0.0	0.5	S6
M207	339	2070	20044	383089	6335998	1.6	0.5	45.0	0.0	0.2	S6
M206 Tish Creek	340	2071	20045	383200	6336175	2.7	2.1	28.0	0.1	0.5	S6
M205	341	2072	20046	383200	6336190	2.0	1.6	60.0	0.0	0.4	S6
M204	342	2073	20047	383223	6336197	N/A	N/A	N/A	N/A	N/A	NCD
M203	343	2074	20048	383237	6336250	2.0	1.4	70.0	0.0	0.4	S6
M202	344	2075	20049	383640	6336995	N/A	N/A	N/A	N/A	N/A	NCD
M201	345	2076	20050	383745	6337089	0.7	0.5	40.0	0.0	0.3	S6
M200	346	2077	20051	383805	6337156	1.1	0.9	30.0	0.0	0.1	S6
	400	4000	10200	382493	6361723	N/A	N/A	N/A	N/A	N/A	NCD
	401	4001	10201	382481	6361649	0.8	0.7	15.0	0.1	0.1	S6
	403	4002	10203	382456	6361619	0.8	0.8	13.5	0.1	0.1	S6

Highlighted rows indicate potentially navigable crossings

(continued)

**Table 1
Potentially Navigable Stream Crossings of the Proposed Schaft Creek Project Road Route (completed)**

Local Name	Site	ILP	NID	UTM		Average Channel	Average Wetted	Average	Average Pool	Average Wb Depth	Stream Class
				Easting	Northing	Width	Width	Gradient	Depth		
M131	402	4002	10202	382464	6361639	0.6	0.7	16.5	0.1	0.1	S6
	404	4003	10204	382418	6361572	0.5	0.5	18.0	0.1	0.1	S6
	405	4004	10205	382414	6361567	0.5	0.3	12.0	N/A	N/A	NCD
	406	4005	10205	382399	6361561	N/A	N/A	N/A	N/A	N/A	NCD
	407	4006	10207	382390	6361528	1.6	1.0	13.5	0.1	N/A	S6
	408	4007	10208	382296	6361414	N/A	N/A	N/A	N/A	N/A	NCD
	410	4008	10210	382280	6361401	N/A	N/A	N/A	N/A	N/A	S6
M136	409	4008	10209	382292	6361393	0.7	0.8	12.0	0.5	0.2	NCD
	411	4009	10211	382265	6361358	N/A	N/A	N/A	N/A	N/A	NCD
	412	4010	10212	382124	6361160	N/A	N/A	N/A	N/A	N/A	NCD
M137	413	4011	10213	382031	6361027	0.7	0.9	16.5	0.1	0.2	S6
M138	414	4012	10214	381920	6360824	N/A	N/A	N/A	N/A	N/A	NCD
M139	415	4013	10215	381820	6360698	0.7	0.8	21.0	0.1	0.1	S6
M140	416	4014	10216	381670	6360500	0.9	1.1	8.0	0.1	0.2	S6
M141	417	4015	10219	381626	6360439	N/A	N/A	N/A	N/A	N/A	NCD
M142	418	4016	10220	381590	6360382	N/A	N/A	N/A	N/A	N/A	NCD
	419	4017	10221	381372	6360077	1.5	1.6	4.0	0.1	1.6	S6
	420	4018	10224	381032	6359884	1.0	0.0	5.0	N/A	0.3	S6
	421	4019	10225	381000	6359858	N/A	N/A	N/A	N/A	N/A	NCD
	422	4020	10226	380977	6359829	N/A	N/A	N/A	N/A	N/A	NCD
	423	4021	10228	384862	6340351	N/A	N/A	N/A	N/A	N/A	NCD
	M100 Mess Creek	225		10145	384536	6361837	44.2	22.3	0.5	N/A	1.2
M101 Mess Creek	226		10151	384357	6362162	20.0	20.0	0.5	N/A	1.8	S1

Highlighted rows indicate potentially navigable crossings

Table 2
Potentially Navigable Stream Crossings along the Proposed Schaft Creek Access Road

Local Name	Site	ILP	NID	UTM		Average Channel Width (m)	Average Wetted Width (m)	Average Gradient (%)	Average Pool Depth (m)	Bankfull Depth (m)	Stream Class
				Easting	Northing						
M42	139	1038	10050	385161	6342171	4.9	1.9	24.0	0.1	0.8	S3
M52 Hits Creek	153	1052	10067	385423	6343199	4.0	2.3	22.0	0.3	0.6	S5
M64 Itsh Creek	173	1072	10091	384668	6345904	4.2	2.7	27.0	0.2	0.7	S5
M67 Jori Creek	179	1078	10097	384817	6347037	6.8	4.4	6.7	0.3	0.9	S2
M68 Alexander Creek	180	1079	10098	384913	6347801	21.1	6.2	5.5	0.0	1.8	S2
M72 Mikael Creek	187	1086	10106	384673	6351276	6.8	3.8	4.0	0.4	0.7	S2
M81 Alicia Creek	200	1099	10119	385415	6354469	6.5	4.2	9.0	0.3	0.5	S2
M88 Nahta Creek	209	1108	10128	385720	6356007	19.7	16.2	3.5	0.0	1.8	S2
M107 Big B Creek	233	1130	10157	383648	6363017	2.9	2.5	5.5	0.3	0.3	S3
M114	246	1138	10172	383003	6363545	3.1	1.2	18.0	0.0	0.4	S5
M120	253	1145	10179	382972	6362776	3.3	0.3	28.5	0.0	0.4	S5
M27 Arctic Creek	300	2000	20000	383909	6337546	12.5	8.9	4.3	0.4	0.7	S2
M216	331	2061	20035	382591	6333445	10.3	3.5	4.0	0.1	0.9	S2
M212	399	2061	20039	382965	6335329	7.9	5.6	8.0	0.2	0.8	S2
M100 Mess Creek	225		10145	384536	6361837	44.2	22.3	0.5	0.0	1.2	S1
M101 Mess Creek	226		10151	384357	6362162	20.0	20.0	0.5	0.0	1.8	S1

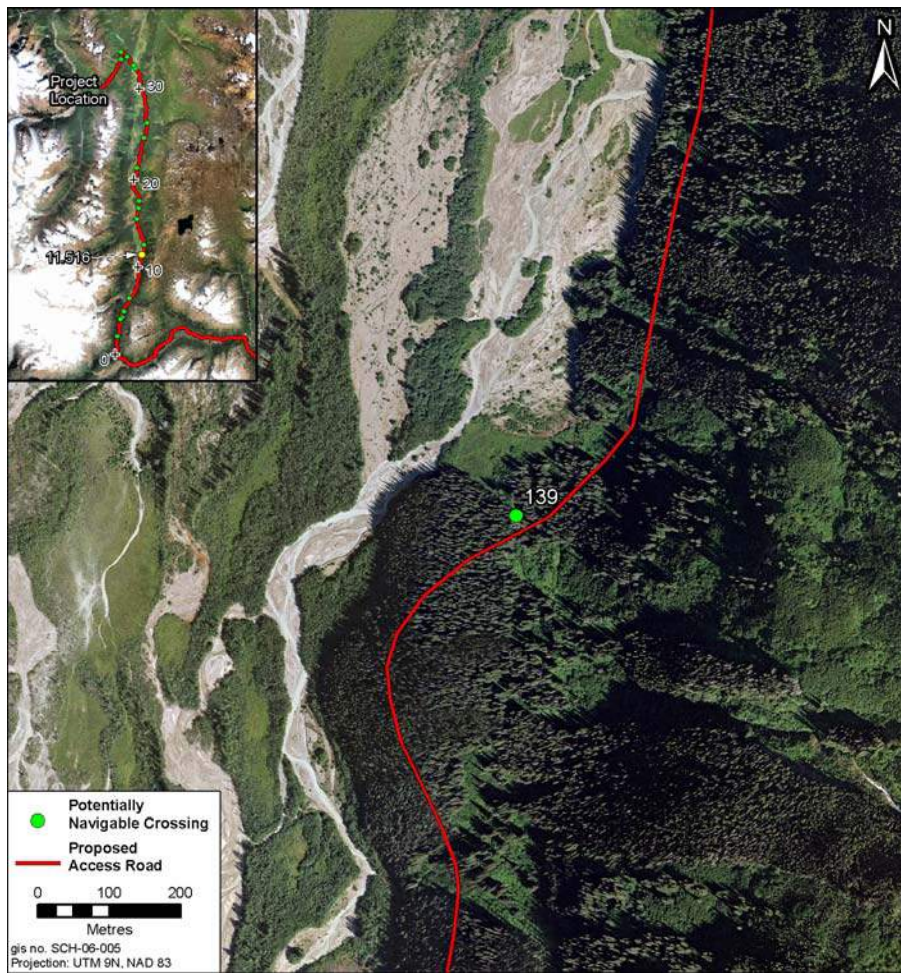
Schaft Creek Project Potentially Navigable Waters

Site 139



Crossing Name	Site 139, M42	Stream Class	S3
Comments	Moderate gradient, fair habitat quality, evidence of debris flows.	Latitude	57° 12' 29.744" N
		Longitude	130° 54' 4.306" W

Watercourse Channel	Wetted Width (m):	Bankfull Width (m):	Bankfull Depth (m):	Gradient (%):
	1.9	4.9	0.8	24



Upstream view of crossing location



View towards the left bank at the crossing location



Downstream view of crossing location.



View looking upstream towards the right bank.

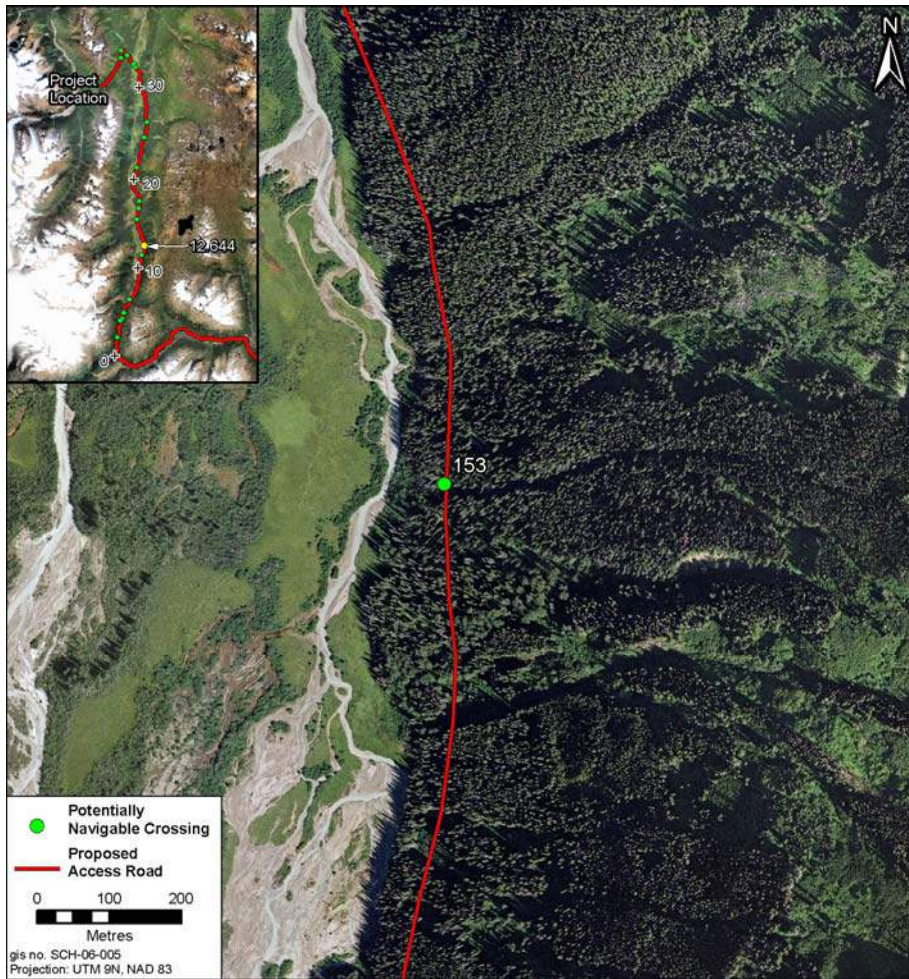
Schaft Creek Project Potentially Navigable Waters

Site 153



Crossing Name	Site 153, M52 Hits Creek	Stream Class	S5
Comments	Step-pool morphology, evidence of debris flows upstream.	Latitude	57° 13' 3.207" N
		Longitude	130° 53' 50.406" W

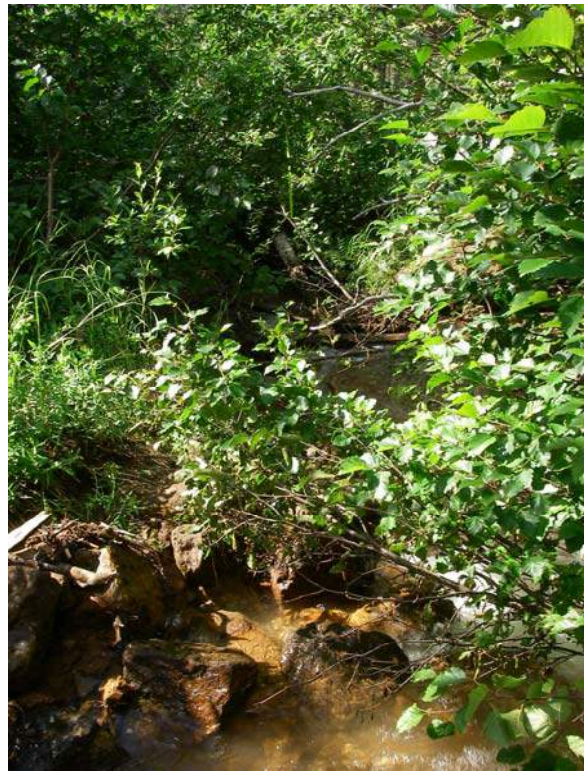
Watercourse Channel	Wetted Width (m):	Bankfull Width (m):	Bankfull Depth (m):	Gradient (%):
	2.3	4.0	0.6	22



Upstream view of crossing location



View looking downstream towards the left bank



Downstream view of crossing location



View looking downstream towards the right bank

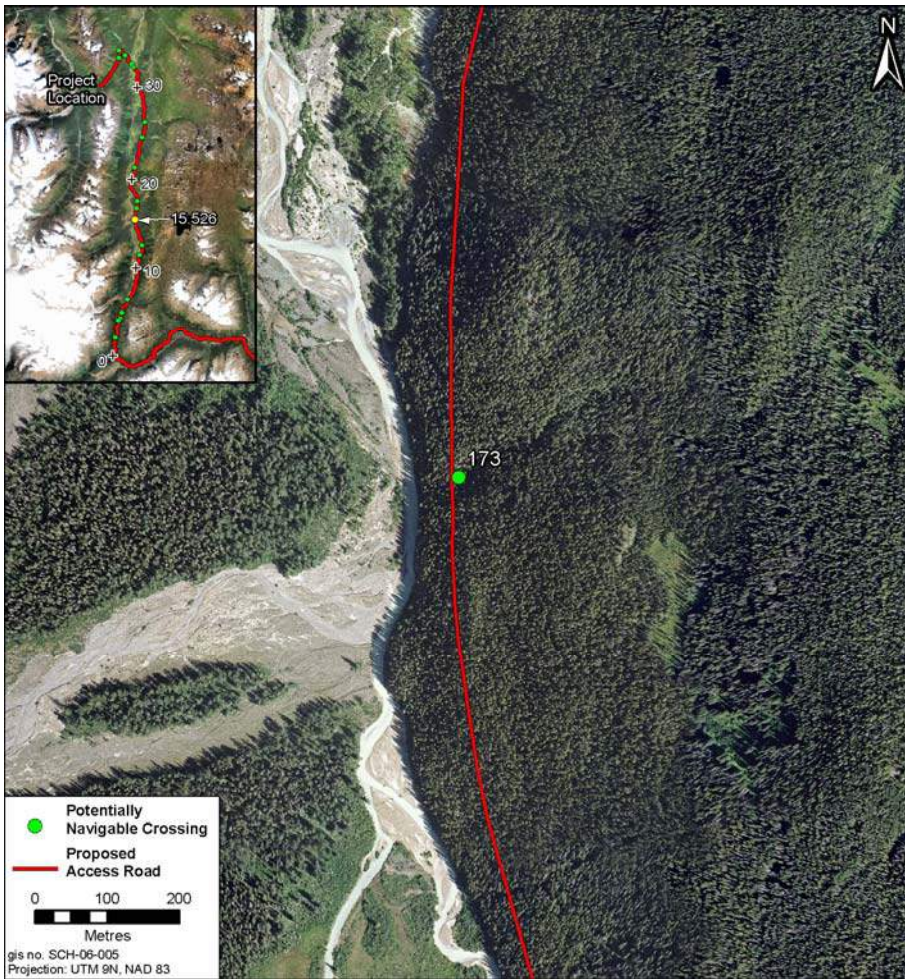
Schaft Creek Project Potentially Navigable Waters

Site 173



Crossing Name	Site 173, M64 Tish Creek	Stream Class	S5
Comments	Step-pool morphology with unstable banks.	Latitude	57° 14' 29.954" N
		Longitude	130° 54' 39.908" W

Watercourse Channel	Wetted Width (m):	Bankfull Width (m):	Bankfull Depth (m):	Gradient (%):
	2.7	4.2	0.7	27



Upstream view of crossing location



View towards the left bank at the crossing location



View looking downstream towards the left bank



Downstream view of crossing location.

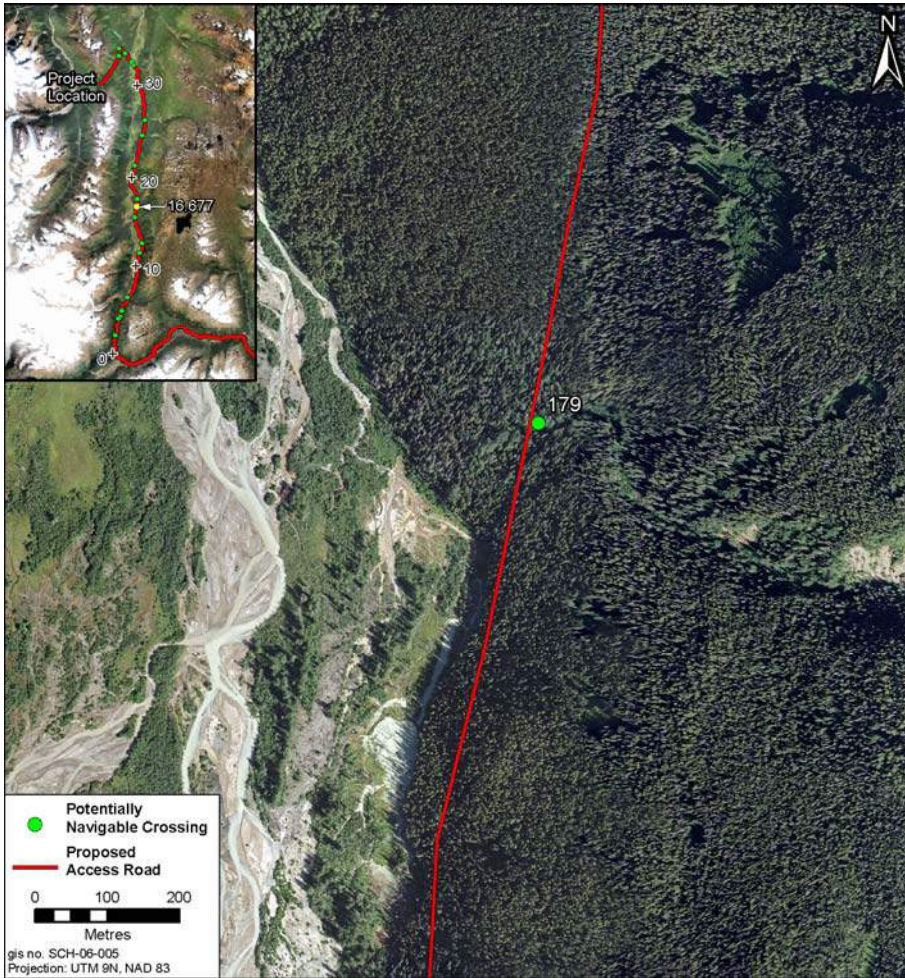
Schaft Creek Project Potentially Navigable Waters

Site 179

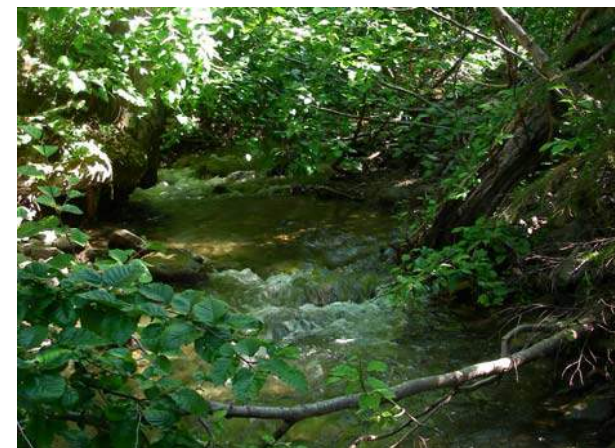


Crossing Name	Site 179, M67, Jori Creek	Stream Class	S2
Comments	Alluvial fan stream with evidence of bedload movement.	Latitude	57° 15' 6.709" N
		Longitude	130° 54' 32.918" W

Watercourse Channel	Wetted Width (m):	Bankfull Width (m):	Bankfull Depth (m):	Gradient (%):
	4.4	6.8	0.9	6.7



Downstream view of crossing location.



Upstream view of crossing location



View looking downstream towards the right bank



View looking upstream towards the right bank.



View looking downstream towards the left bank

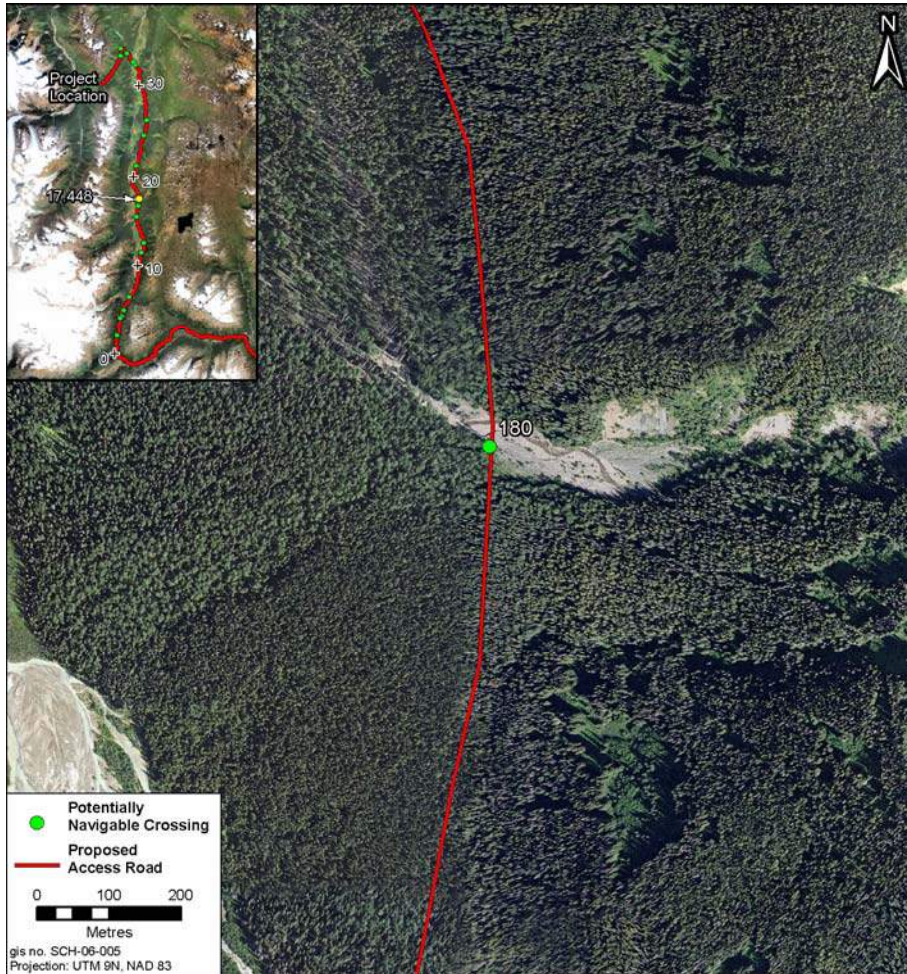
Schaft Creek Project Potentially Navigable Waters

Site 180



Crossing Name	Site 180, M68, Alexander Creek	Stream Class	S2
Comments	Large, dynamic stream with wide floodplain.	Latitude	57° 15' 31.490" N
		Longitude	130° 54' 28.470" W

Watercourse Channel	Wetted Width (m):	Bankfull Width (m):	Bankfull Depth (m):	Gradient (%):
	6.2	21.1	1.8	5.5



Upstream view of crossing location



View looking downstream towards the left bank



View towards the left bank at the crossing location



Downstream view of crossing location.

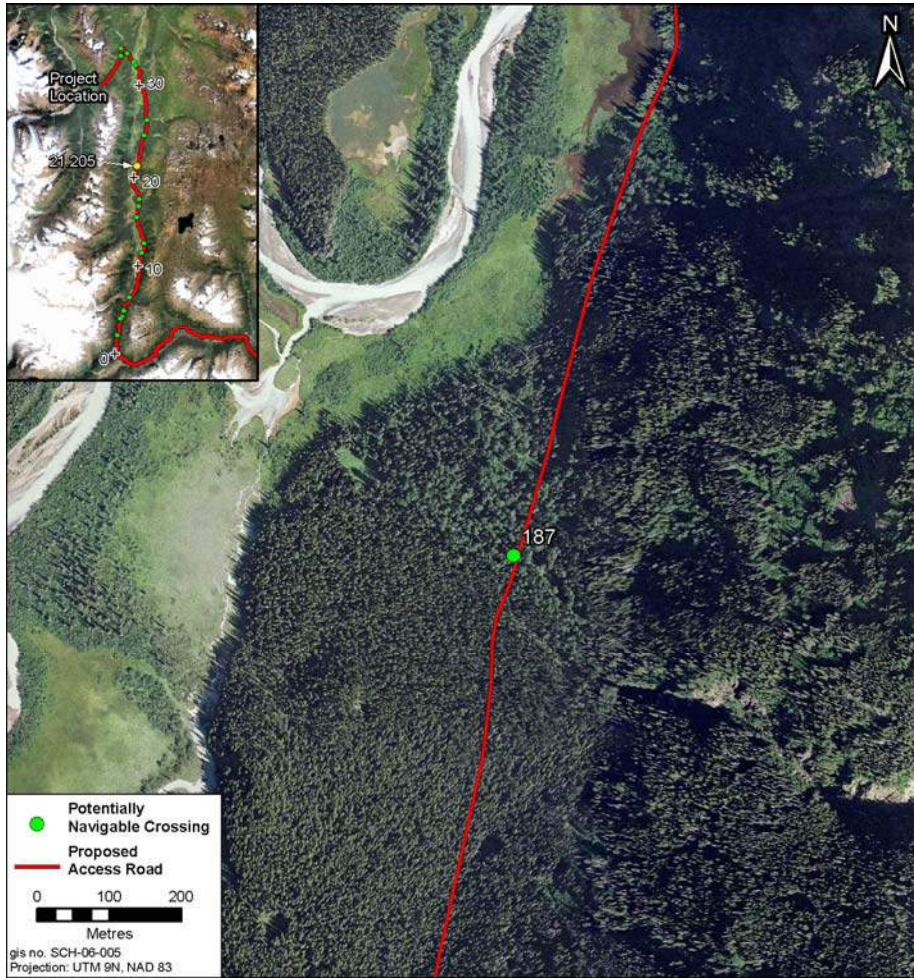
Schaft Creek Project Potentially Navigable Waters

Site 187



Crossing Name	Site 187, M72, Mikael Creek	Stream Class	S2
Comments	Nice moderate-size stream with good pools and LWD.	Latitude	57° 17' 23.588" N
		Longitude	130° 54' 48.610" W

Watercourse Channel	Wetted Width (m):	Bankfull Width (m):	Bankfull Depth (m):	Gradient (%):
	3.8	6.8	0.7	4



Upstream view of crossing location



View looking upstream towards the left bank.



Downstream view of crossing location.

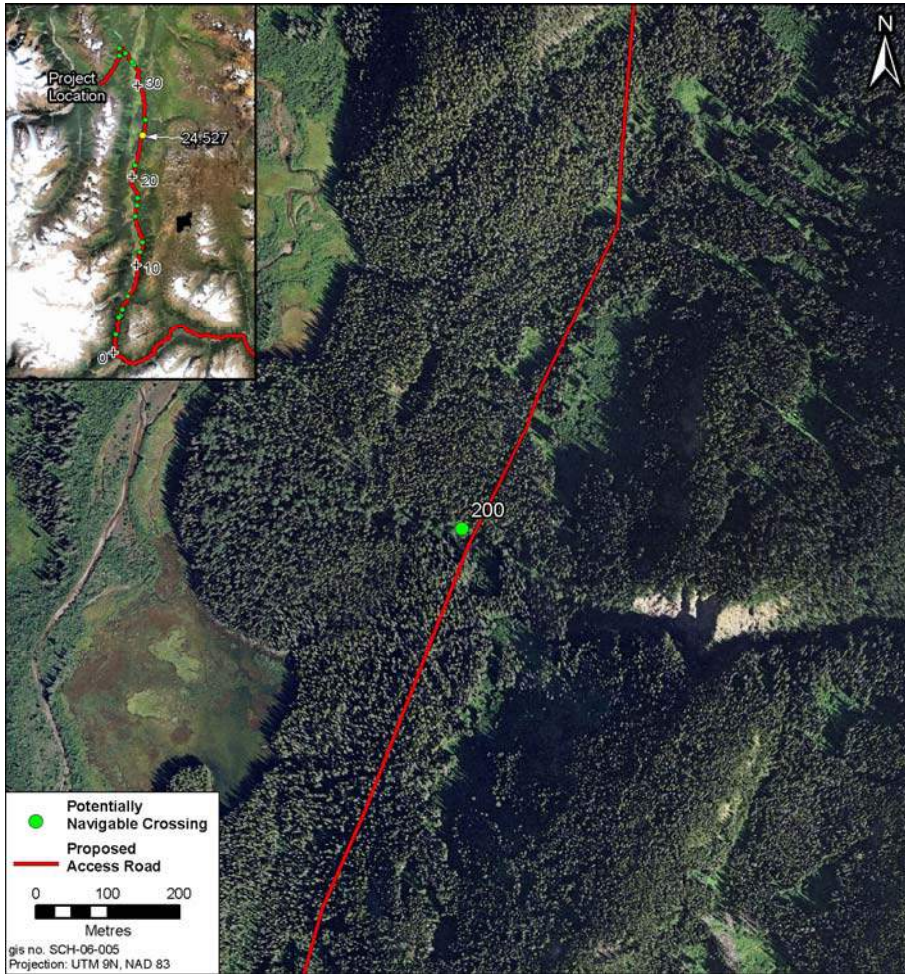
Schaft Creek Project Potentially Navigable Waters

Site 200



Crossing Name	Site 200, M81, Alicia Creek	Stream Class	S2
Comments	Step-pool stream with LWD and boulders.	Latitude	57° 19' 7.461" N
		Longitude	130° 54' 9.646" W

Watercourse Channel	Wetted Width (m):	Bankfull Width (m):	Bankfull Depth (m):	Gradient (%):
	4.2	6.5	0.5	9



Downstream view of crossing location.



View towards the right bank at the crossing location



View looking downstream towards the right bank



View looking upstream towards the right bank.



View looking downstream towards the left bank

Schaft Creek Project Potentially Navigable Waters

Site 209



Crossing Name	Site 209, M88, Nahta Creek	Stream Class	S2
Comments	Large stream with boulders and wide floodplain.	Latitude	57° 19' 57.447" N
		Longitude	130° 53' 53.988" W

Watercourse Channel	Wetted Width (m):	Bankfull Width (m):	Bankfull Depth (m):	Gradient (%):
	16.2	19.7	1.8	3.5



Downstream view of crossing location.



View towards the right bank at the crossing location



View looking downstream towards the right bank



View looking upstream towards the right bank.



Upstream view of crossing location

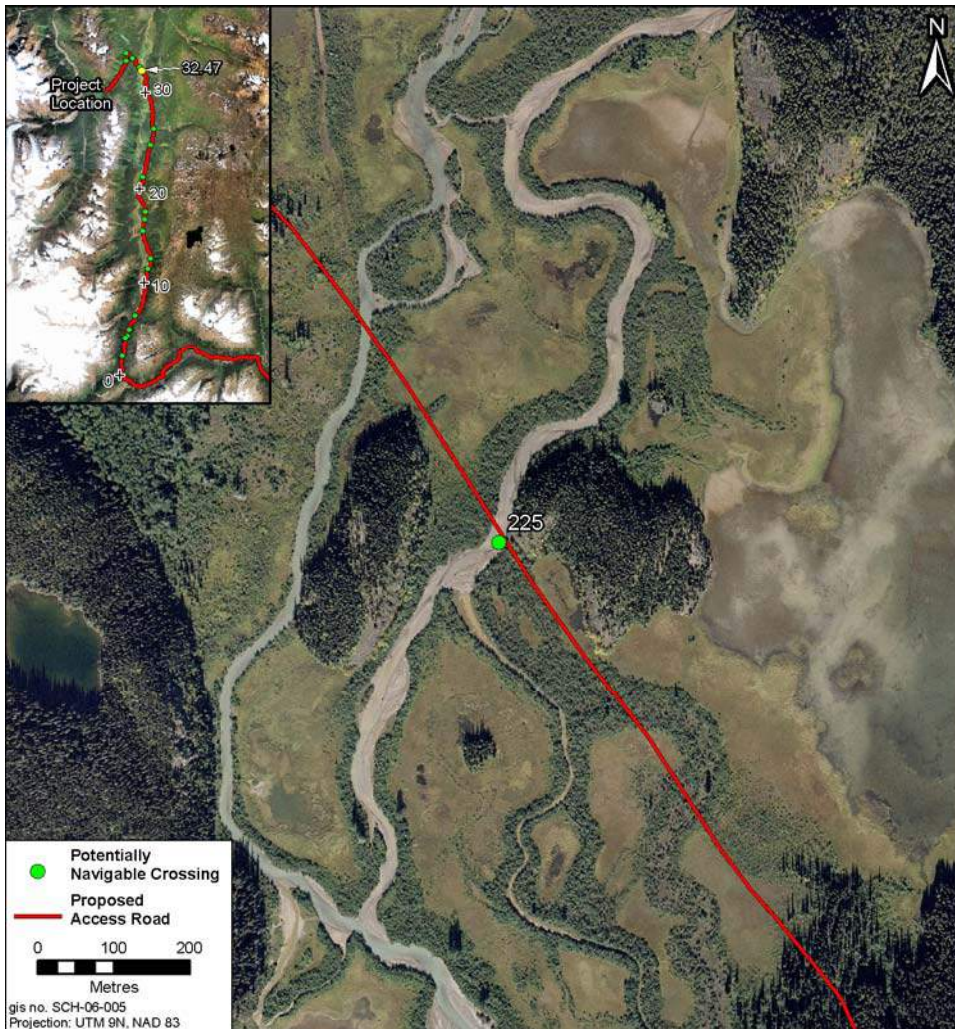
Schaft Creek Project Potentially Navigable Waters

Site225



Crossing Name	Site 225, M100, Mess Creek	Stream Class	S1
Comments	Large, turbid, meandering river with multiple channels	Latitude	57° 23' 4.802" N
		Longitude	130° 55' 14.586" W

Watercourse Channel	Wetted Width (m):	Bankfull Width (m):	Bankfull Depth (m):
	22.3	44.2	1.2



Upstream view of crossing location



Downstream view of crossing location.

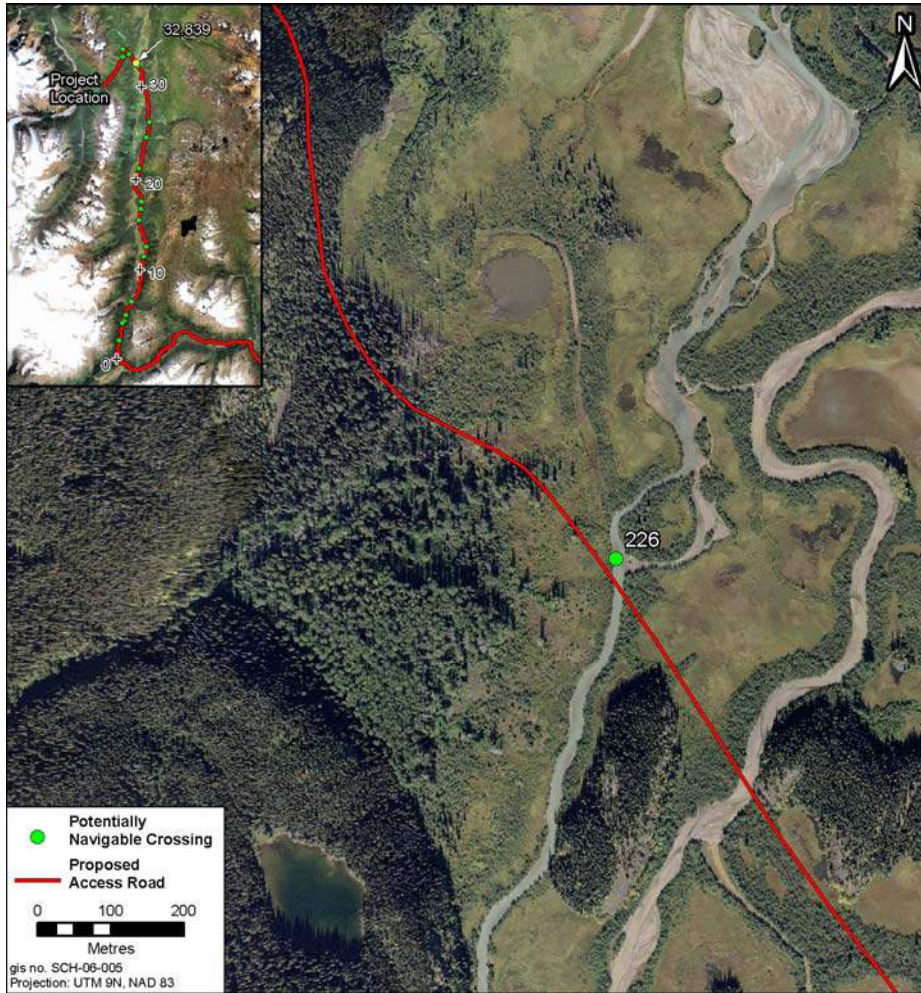
Schaft Creek Project Potentially Navigable Waters

Site 226



Crossing Name	Site 226, M101, Mess Creek	Stream Class	S1
Comments	Large, turbid, meandering river with multiple channels	Latitude	57° 23' 15.143" N
		Longitude	130° 55' 25.849" W

Watercourse Channel	Wetted Width (m):	Bankfull Width (m):	Bankfull Depth (m):	Gradient (%):
	20.0	20.0	1.8	0.5



Upstream view of crossing location



View looking downstream towards right bank



View downstream from crossing location

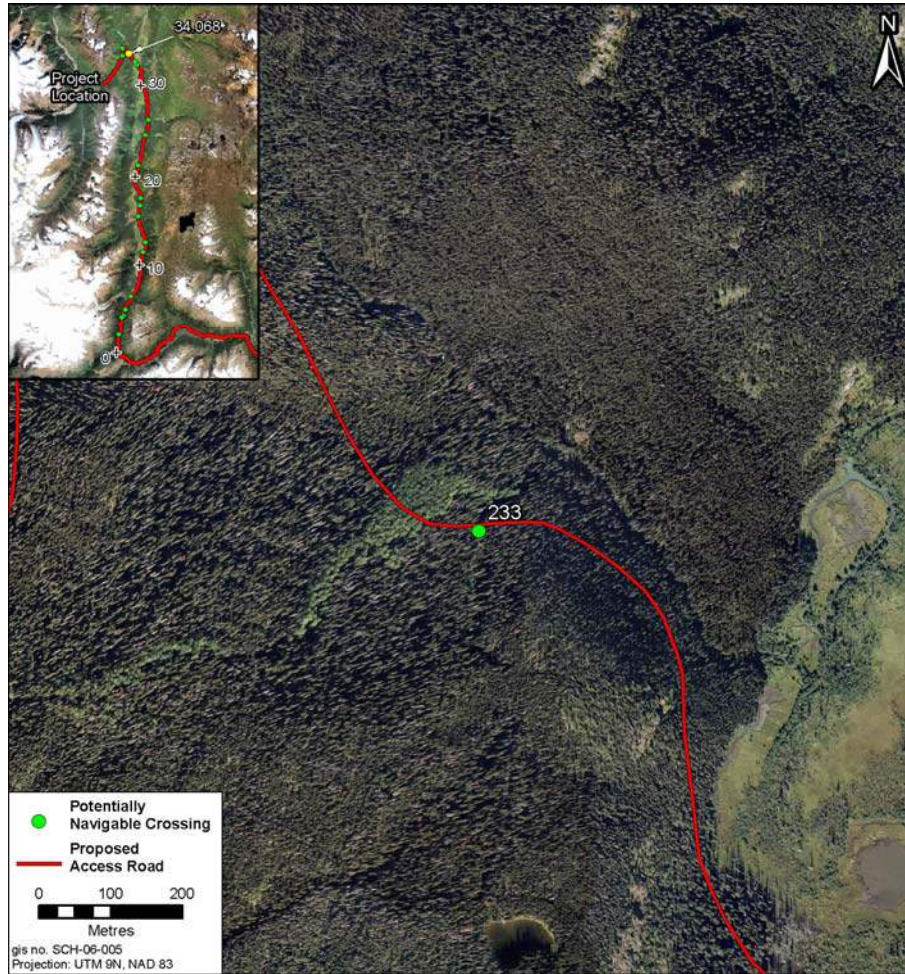
Schaft Creek Project Potentially Navigable Waters

Site 233



Crossing Name	Site 233, M107, Big B Creek	Stream Class	S3
Comments	Low, stable banks with deep pools and abundant cover.	Latitude	57° 23' 42.126" N
		Longitude	130° 56' 9.740" W

Watercourse Channel	Wetted Width (m):	Bankfull Width (m):	Bankfull Depth (m):	Gradient (%):
	2.5	2.9	0.3	5.5



Downstream view of crossing location.



View looking upstream towards the left bank.



Upstream view of crossing location



View looking upstream towards the right bank.

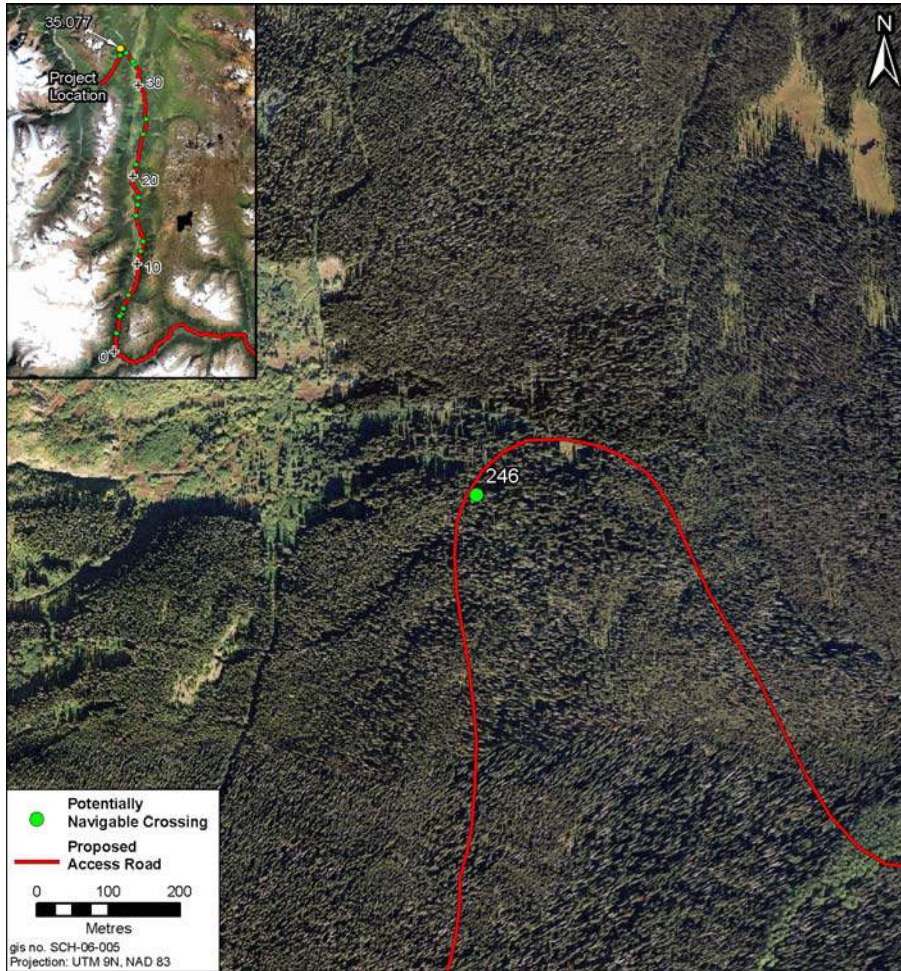
Schaft Creek Project Potentially Navigable Waters

Site 246



Crossing Name	Site 246, M114	Stream Class	S3
Comments	Shallow, clear stream with good flow.	Latitude	57° 23' 58.596" N
		Longitude	130° 56' 49.257" W

Watercourse Channel	Wetted Width (m):	Bankfull Width (m):	Bankfull Depth (m):	Gradient (%):
	1.2	3.1	0.4	18.0



Upstream view of crossing location



Downstream view of crossing location.

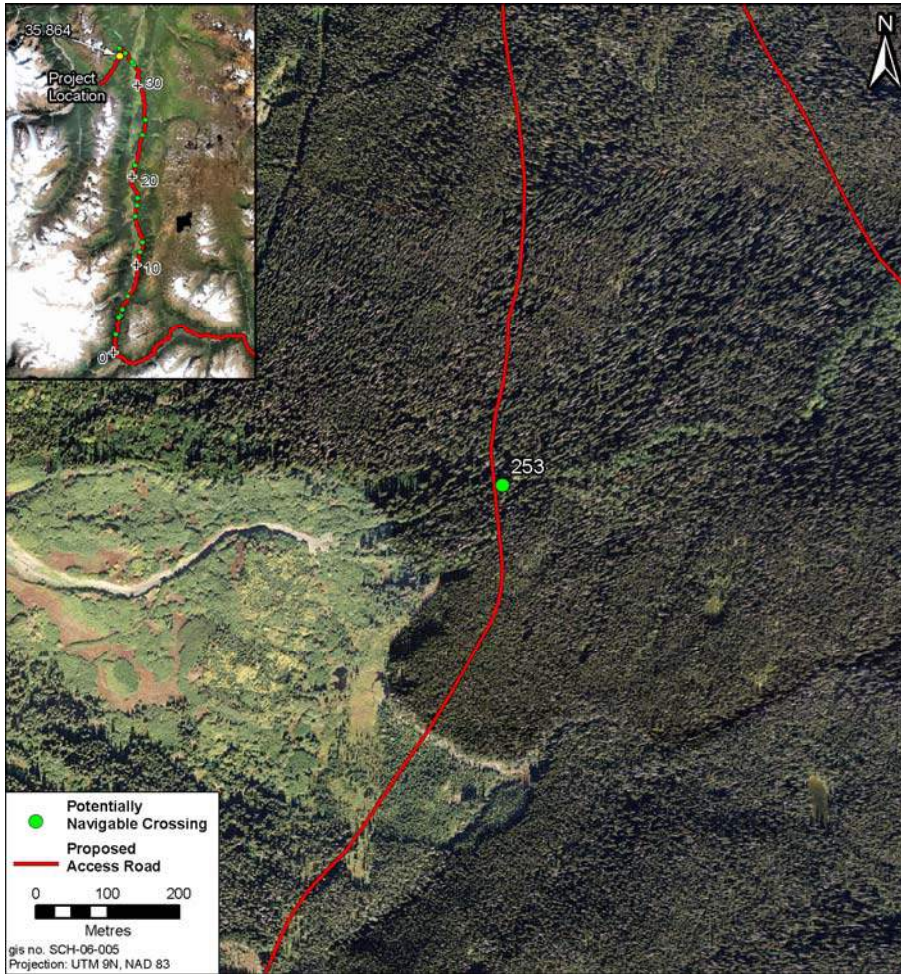
Schaft Creek Project Potentially Navigable Waters

Site 253



Crossing Name	Site 253, M120	Stream Class	S5
Comments	Small stream flows down debris chute, scoured to bedrock.	Latitude	57° 23' 33.713" N
		Longitude	130° 56' 49.794" W

Watercourse Channel	Wetted Width (m):	Bankfull Width (m):	Bankfull Depth (m):	Gradient (%):
	0.3	3.3	0.4	28.5



Upstream view of crossing location



Downstream view of crossing location.

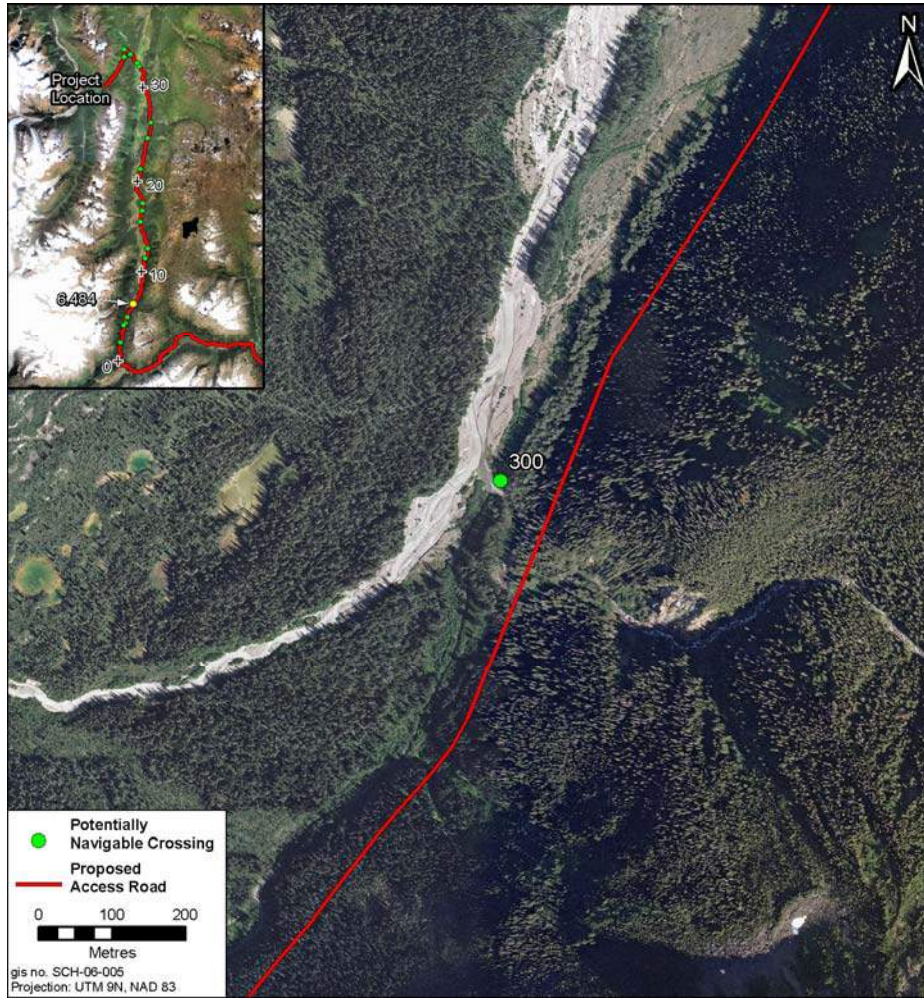
Schaft Creek Project Potentially Navigable Waters

Site 300



Crossing Name	Site 300, M27, Arctic Creek	Stream Class	S2
Comments	Large stream with gravel/cobble substrate and pools.	Latitude	57° 9' 59.122" N
		Longitude	130° 55' 11.116" W

Watercourse Channel	Wetted Width (m):	Bankfull Width (m):	Bankfull Depth (m):	Gradient (%):
	8.9	12.5	0.7	4.3



Upstream view of crossing location



View looking upstream towards the left bank.



Downstream view of crossing location.



View towards the left bank at the crossing location

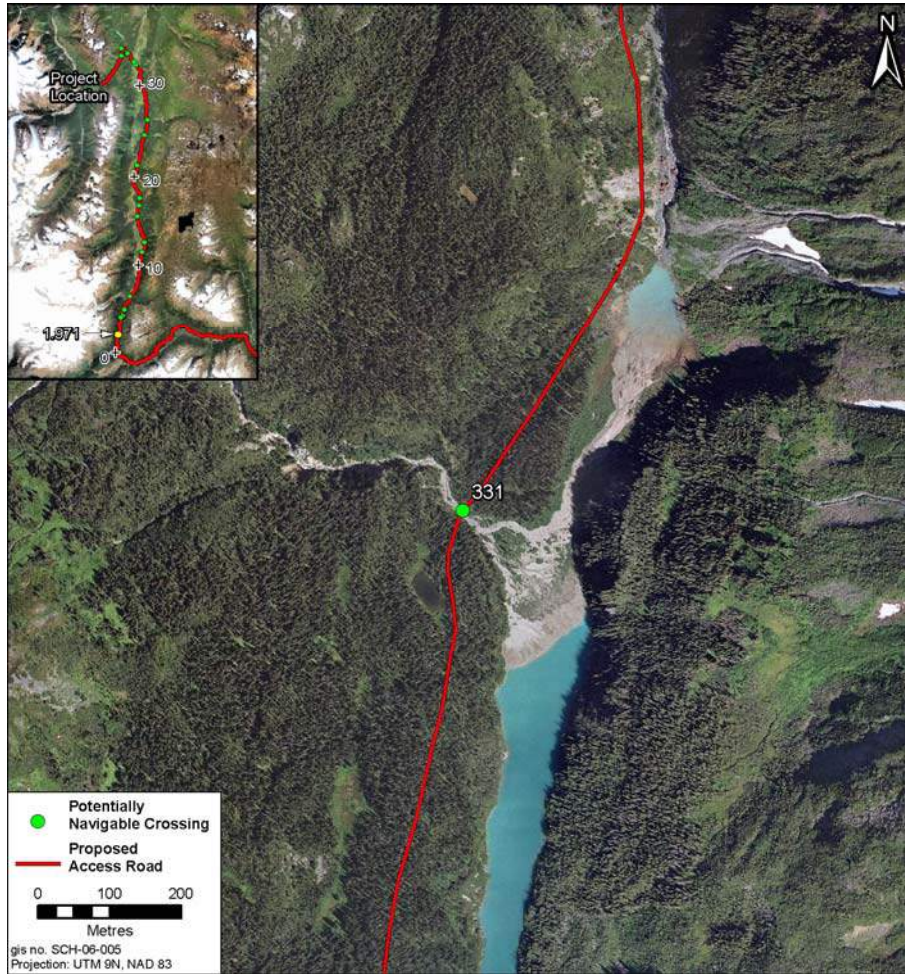
Schaft Creek Project Potentially Navigable Waters

Site 331



Crossing Name	Site 331, M216	Stream Class	S2
Comments	Large stream with abundant boulders and deep pools.	Latitude	57° 7' 45.366" N
		Longitude	130° 56' 22.587" W

Watercourse Channel	Wetted Width (m):	Bankfull Width (m):	Bankfull Depth (m):	Gradient (%):
	3.5	10.3	0.9	4.0



Upstream view of crossing location



Downstream view of crossing location.

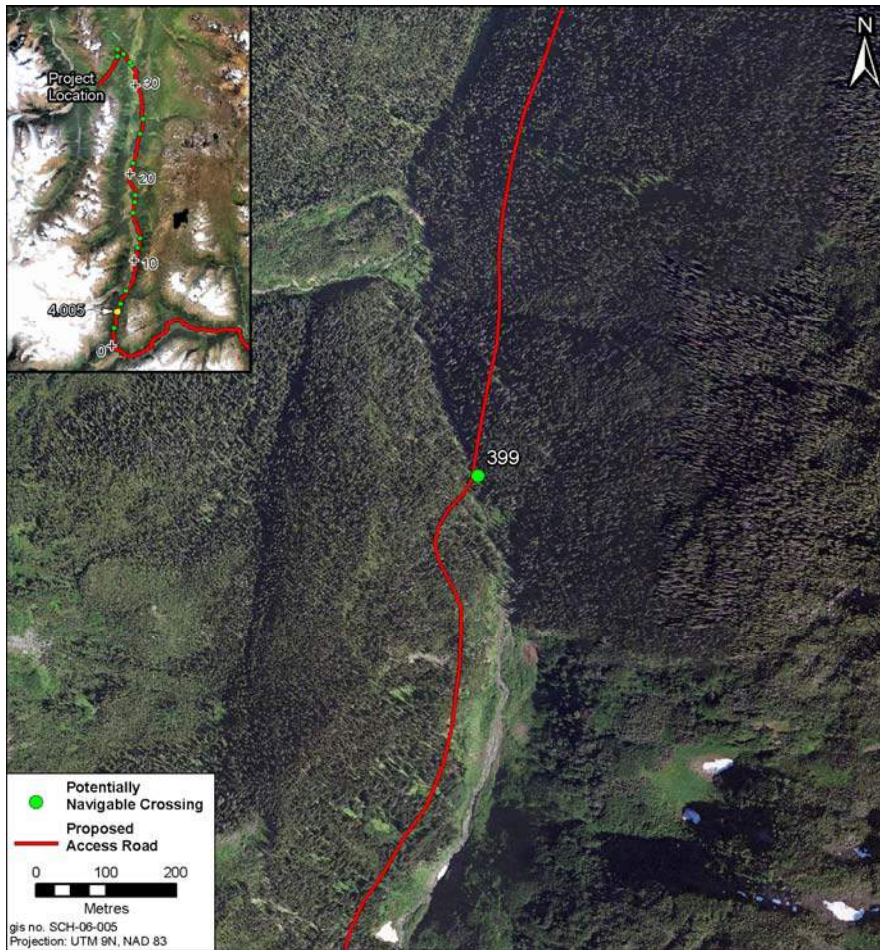
Schaft Creek Project Potentially Navigable Waters

Site 399



Crossing Name	Site 399, M212	Stream Class	S2
Comments	Large stream with abundant cover.	Latitude	57° 8' 46.603" N
		Longitude	130° 56' 3.536" W

Watercourse Channel	Wetted Width (m):	Bankfull Width (m):	Bankfull Depth (m):	Gradient (%):
	5.6	7.9	0.8	8.0



Upstream view of crossing location



Downstream view of crossing location.